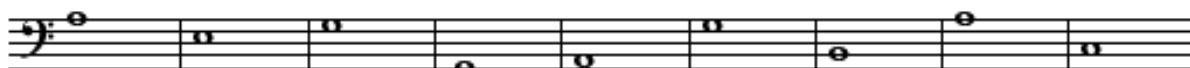
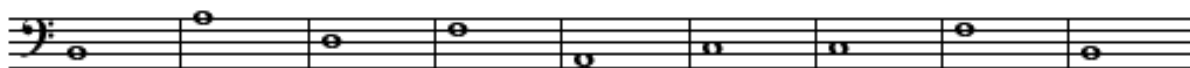
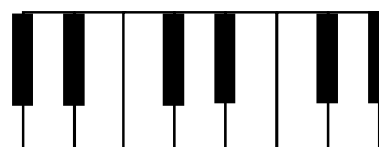
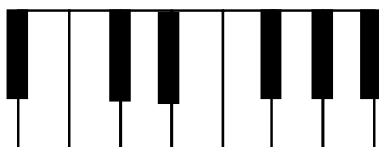


Bass Clef and Staff Homework

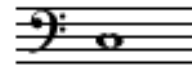
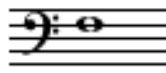
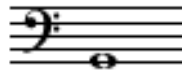
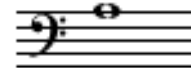
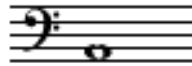
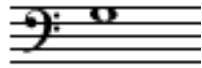
1 Write the letter names of the following notes. USE CAPITAL LETTERS.



2 Place an asterisk (*) on the keyboard where the note C would be located.



3 Write the letter names of the following notes using CAPITAL LETTERS, than place an asterisk (*) on the keyboard where the note would be located.



4 Write the notes on the staff indicated by the asterisk (*) on the keyboard. Write the letter names of the notes using CAPITAL LETTERS in the space provided.

