

Full Name: _____

Grade (Circle One): 7th or 8th

Online: www.MrWlive.com

Governor Mifflin Middle School Chorus Reflection Worksheet: Quarter #2

Instructions: Please rate yourself honestly on the quality of your participation during chorus rehearsals. Choose the description in each section that best describes you and circle it. Then, total your numbers in the box.

**My Total out of
70 was _____.**

1. Attendance during rehearsals:

- 10 I always attend
- 8 I mostly attend
- 6 I sometimes attend
- 4 I rarely attend
- 2 I never attend

2. Participation during chorus:

- 10 I participate constantly
- 8 I often participate
- 6 I sometimes participate
- 4 I rarely participate
- 2 I never participate

3. Listening to teacher or other speakers:

- 10 I listen constantly
- 8 I often listen
- 6 I listen sometimes
- 4 I rarely listen
- 2 I never listen

4. Unnecessary talking during rehearsal:

- 10 I never talk during rehearsals
- 8 I almost never talk during rehearsals
- 6 I rarely talk during rehearsals
- 4 I sometimes talk during rehearsals
- 2 I often talk during rehearsals

5. Tall Singing Posture:

- 10 I always use tall singing posture
- 8 I often use tall singing posture
- 6 I sometimes use tall singing posture
- 4 I rarely use tall singing posture
- 2 I almost never use tall singing posture

6. Tall Vowel Shape (Open Mouth Singing):

- 10 I always use tall vowel shapes
- 8 I often use tall vowel shapes
- 6 I sometimes use tall vowel shapes
- 4 I rarely use tall vowel shapes
- 2 I almost never use tall vowel shapes

7. Singing Confidently (with Choral Blend):

- 10 I always sing musically, to the best of my ability
- 8 I often sing out, but am still holding back
- 6 I sometimes sing out, but am very self-conscious
- 4 I rarely sing out- other people can do it.
- 2 I almost never sing, singing is for "chumps"

BONUS. Gum Chewer? - BONUS or PENALTY:

- + 5 I have NEVER had gum in chorus.
- 0 I used to chew gum in chorus, but stopped when Mr. W reminded us!
- 5 I HAVE had gum in chorus since Mr. W. told us not to chew while singing.

8. Instructions: Please answer the following question or questions (your choice) below honestly. Your answer should be at least five (5) sentences in length.

How is singing in Chorus different than singing Popular Music heard on the radio?

Which is your favorite chorus song, and why? Which is your least favorite song, and why?

9. When Is Our Next Concert? _____

Please return to Mr. Williamson on or before January 15th.

Each line and space on the staff represents a specific pitch. Here are some basic rules of music reading.

Rule 1- As notes ascend on the staff, their sounds rise in pitch. As they descend on the staff, their sounds lower in pitch.

Circle the higher pitch in each measure.

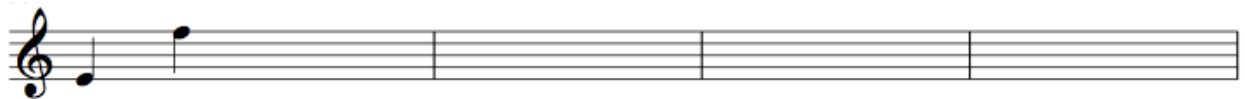


Circle the lower pitch in each measure.

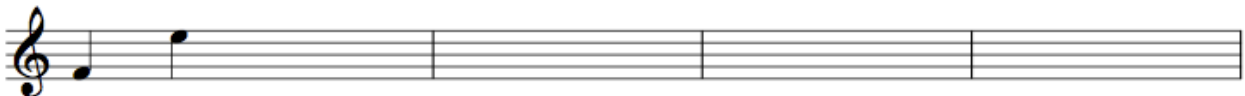


Rule 2- Notes are classified as either "line notes" or "space notes." Line notes have a line of the staff going **through** them, and space notes are **in** the spaces between the staff lines.

Draw line notes on all of the lines of the staff. (Notes on or above the middle line have stems pointing down on the left, notes below the middle line have stems pointing up on the right.) Make the rhythm fit four beats in each measure, and write the counts underneath the notes.



Do the same with space notes. Make sure you are using all of the notes you have learned.



Rule 3- There are 7 notes in the musical alphabet - A,B,C,D,E,F and G- which repeat over and over. When notes move up on the staff from one note to the very next one, they ascend in order (ex. A, B, C...) in the musical alphabet.

Write the missing names of notes in the staves below.



A B _ _ _ D _ _ _ F _ _ _



C B _ _ _ E _ _ _